

**Volume 7
Issue 2
Apr 2007**

MBA
business software
www.mbabsi.com

Headline News

On January 30, 2007 the Internal Revenue Service announced the updated Form 940, *Employer's Annual Federal Unemployment Tax Return*. The form has been in redesign since May 2004. Among other enhancements designed to make it easier to use, the form uses plain language, a more logical sequence, and is compatible with optical scanning. Form 940-EZ has been discontinued.

Version 4.2

See page 4
for more info!

Gain Quick Access To Information With New Business Insights Explorer

If your organization has deployed Sage MAS 90 ERP as its business management software, you have the advantage of a rich feature set across more than 25 modules. Now, with the release of Sage MAS 90 Version 4.2, a new tool is included to make it fast and easy to locate the information you require—**Business Insights Explorer**. With Business Insights Explorer you can enhance productivity, customer service, and decision-making effectiveness across your organization—from personalized customer service to improved cash flow.

Let's take a look at how your organization can benefit.

Customer Service

When a customer calls, it's anybody's guess what they may need. It could be a call to place an order, add a contact, request a return authorization, check their credit balance, find purchased items on an outstanding invoice, add a ship-to address, check product availability—the list is extensive—you can probably think of a dozen more specific to your organization.

Your customer service staff needs to be prepared to handle all of these tasks, and to do it quickly and efficiently. Business Insights Explorer is the perfect tool for quick access to everything

you need to assist your customers. Business Insights Explorer gives you view-only access to customer information and is laid out in three sections. The Primary grid, the Secondary or detail grid, and the Navigation bar.

The Primary customer grid view has been designed so you can quickly locate a customer account. Each staff member can personalize their grid so that the information is organized in the way that is most useful to them. For example, if

the quickest way to look up a customer account is by using their telephone number, that column can be moved to the left side of the grid so that it is easy to find. Clicking on the top of the column allows you to sort the grid by values in that column.



Give your customer service, sales, and collections staff quick access to the information they need with the new Business Insights Explorer functionality.

Once the customer record has been found, credit limit and outstanding balance information can be accessed right in the main grid. To find further details regarding the customer account, use the Secondary or detail grid.

The contents of this detail grid can be changed simply by clicking on radio buttons contained in the third section of the screen, the Navigation bar. From the **Preview** section of the Navigation bar, you can choose to display any of the following in the Secondary grid: customer

Continued on Page 2

Compliments of:

What's Inside

Page Two

Business Insights Explorer

CONTINUED

Page Three

Sage MAS 90 Business Framework

Page Four

In The Spotlight:

Sage MAS 90 Version 4.2

The Power Of The Sage MAS 90 ERP Business Framework

The new Business Framework for Sage MAS 90 was introduced in Version 4.0 for the General Ledger and Library Master modules. The Accounts Receivable, Sales Order, Return Merchandise Authorization, and Bank Account Reconciliation modules were updated to the new framework in Version 4.1. The Version 4.2 release, scheduled for first quarter 2007, incorporates the enhanced user interface for the Accounts Payable module.

Let's take a look at what the new technology of the Business Framework brings you.

Dual-Grid Entry

Dual-grid data entry functionality in the new Business Framework provides for a more streamlined data entry process. The unique dual-grid system allows you to place the most frequently used fields in the primary grid. Fields that rarely change are placed in the secondary grid, where they are easily accessible on those occasions when changes need to be made.

Each user can select the fields to display in the primary grid, customize column widths, and resize windows so that each screen is set up for the most efficient data entry.

Hyperlinks provide quick right-click navigation to related information. For example, in Accounts Payable Vendor Maintenance a simple click brings you to the vendor's primary contact or terms code.

Enhanced Historical Detail

Say goodbye to worrying about timely closing of periods to keep your period-to-date and year-to-date information accurate. With the Business Framework, every transaction is stored with a user/date/time stamp, so that period-to-date information for each period is retained for as long as you choose to retain history. This additional detail allows you to report across multiple periods regardless of whether period-end processing has occurred.

Period-end reporting is simplified too, with a check-box interface for selecting the reports to print prior to closing.

Memo Manager

Memo Manager is a company-wide system for creating, managing, and displaying memos. You can specify whether you want a memo

to pop up in specific screens, and whether it should always pop up or only after a specific reminder date.

Batch Manager

In version 4.2, Batch Manager is enhanced to maintain more comprehensive audit trail information and streamline end-of-day processing with the ability to update a range of batches at one time.

Reporting Options

The new Business Framework makes reporting both easier and more powerful in three ways. First, the **Saved Report Settings** feature allows you to set the criteria for a report once and save it for future use. Next, every standard report is now fully customizable using **Crystal Reports® Designer**. You also can benefit from multiple report output options available through Crystal Viewer, including Microsoft Word and Excel, Adobe PDF, and e-mail. A third option, the wizard-based **Business Insights Reporter**, makes creating custom reports simple—data field names are easy to understand and fields from related entities can be readily attached.

Strong And Flexible Security

Security of your sensitive financial information is of paramount importance. At the same time, the flexibility to empower employees with appropriate access is essential to productivity. The Business Framework introduces **Role-based Security** making security administration more efficient and effective. Now administrators can create roles, such as *Payroll Supervisor* or *Accounts Payable Clerk*, and then assign users to one or more of the roles. Each role then has specific task rights assigned to them.

Advanced security options provide even greater control. For each data element, you can specify by role whether the user will have Create, Modify, Delete, View Only, or Full Control access. View Only access is especially useful for things like credit limits, which everyone needs to see, but only one or two people are authorized to change.

The Business Framework places a User and Date/Time stamp on each transaction every time it is changed, providing powerful audit and fraud detection capabilities.

Customizer Enhancements

You may require that your system be customized to match your business processes. User Defined Fields (UDFs), which lie at the heart of any customization, have become much more powerful while still retaining the ease of use Sage MAS 90 is known for. An unlimited number of UDFs can be added to each entity, such as Customer, and you can specify the various screens and history files you want the UDF information to follow through the system.

Custom Modifications Made Simpler

A less visible benefit of the Business Framework is its object-oriented architecture. This enhances the ease with which programmers can customize the system. The Object Interface module allows enhancements to be built without modifying the underlying Sage MAS 90 source code, and decreases or eliminates the impact of future upgrades on custom integrations.

Give us a call with any questions or to find out more about the Sage MAS 90 Business Framework. ☆

Tips & Tricks

Reversing An Accounts Payable Check (without Job Cost)

1. Open *Manual Check Entry*.
2. Select the appropriate Bank Code.
3. Enter the check number to be reversed.
4. If prompted "Is this a check reversal?" answer *Yes*.
5. To the prompt "Recall original invoices?" Answer *Yes* to reopen the original invoice. Or select *No* and select the *GL Distribution* check-box to leave the invoice closed and only make a correcting journal entry.
6. On the *Lines* tab, the invoice amount will be displayed with a negative amount. Click *Accept*. If using the *GL Distribution* option, manually enter the negative check amount.
7. Print and Update the Manual Check Register. ☆

In The Spotlight: Sage MAS 90 Version 4.2

With the Sage MAS 90 ERP Version 4.2, the Accounts Payable module receives its update to the new Business Framework architecture bringing speedy dual-grid data entry and other benefits. We cover the important benefits of the Business Framework on page three of this newsletter, and highlight Business Insights Explorer, a major component of 4.2, on page one.

Let's take a look at the other significant new capabilities in the release.

Vendor Maintenance

Three new tabs have been added for easy viewing of all the detail retained for Vendors. The **Summary** tab provides the Period-to-Date, Year-to-Date, and Prior Year information as of any period-end by choosing the desired Fiscal Period and Fiscal Year.

The **History** tab provides purchase, payment, and discount information for any fiscal year. In addition, you can toggle the screen to show current and prior year comparative information.

On the **Invoices** tab, the dual-grid allows you to highlight a specific invoice in the top grid, and view all the individual transactions related to it, such as payments and credits, in the lower grid. The data on all of the grid-style tabs—*Invoices*, *Transactions*, and *P/Os*—can be re-sorted by clicking at the top of any column. A *Use P/O Receipt of Invoice Entry* option ensures that invoices from the selected vendor will be correctly received through the Purchase Order module rather than the Accounts Payable module.

Smoother Manual Check Entry And Quick Printing

Quick Print check numbers now are incremented automatically. Alpha-numeric characters are allowed in Manual Check entry to facilitate entry of wire-transfer information.

Enhanced Controls For Checks

A security event for the *Clear* button in Invoice Payment Selection provides tighter controls over printing and deleting check selections. A warning message is displayed when accessing Check Maintenance if checks have been printed but not yet updated.

Forms

Accounts Payable checks can be printed in ANSI-Compliant format, and *Address Line 3* and *Remit-to Address* now can be printed on checks. Extended stubs can print the general ledger account distribution, and to streamline processing, check printing programs save the last form type used.

More 1099 History

With Version 4.2, 1099 Payment History is saved indefinitely, eliminating the requirement to purge last year's 1099s before entering the current year's data.

Reporting Options

New choices make reviewing information easier. For example, you can print the Aged Invoice Report based on *Invoice Due Date* and/or *As-Of* a specific aging date. The Check History Report prints alphabetically by



SAGE MAS 90 SAGE MAS 200
SAGE MAS 500

MBA Business Software

1117 Perimeter Center West
Suite E210
Atlanta, GA 30338

(770) 399-8021
(800) 274-8041 toll free
(770) 399-5772 fax

Email: info@mbabsi.com
Website: www.mbabsi.com



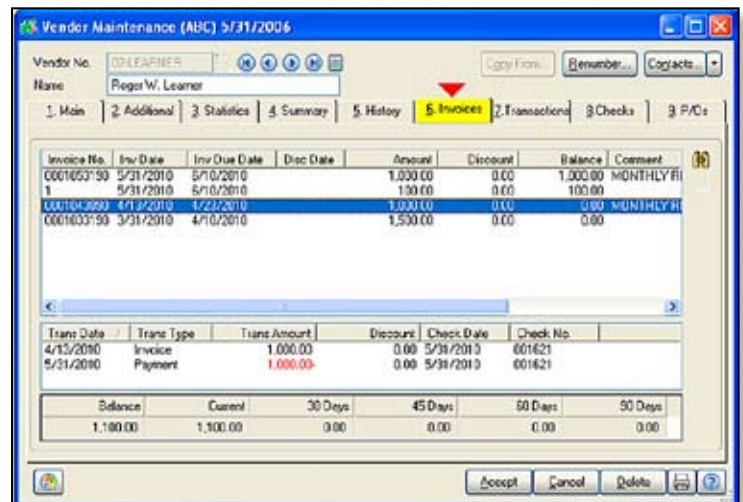
C
o
n
t
a
c
t

More
Info

Click here for more
information on products
and services featured

Vendor Name to make it easier to read. A summary option on the **Cash Requirements Report** makes it easier to get to the bottom line.

Give us a call to optimize your organization's Accounts Payable functions, or to learn more about the features and functionality available in Version 4.2. ★



Using the dual-grid system, you can select an invoice from the main grid and view all the transactions related to that invoice in the resizable lower grid.