

Sage MAS 90 and 200

Version 4.10

Windows Vista™
Compatibility Guide

Contents

- Introduction..... 1**
- Sage MAS 90 and 200 Installation Options 1**
 - Option 1 – Install to the Root Folder 1
 - Option 2 – Running in Elevated and Compatibility Modes 2
- Sage MAS 90 and 200 Workstation Setup Installation Options 3**
- Installing Service Updates 3**
- Considerations..... 3**
 - Third-Party Applications..... 3
 - Application Compatibility Issues 3
 - Windows Help Engine 4
 - Sage MAS 200 Installations and Sage MAS 90 Peer-to-Peer 4
 - Crystal Reports..... 4
- Performance..... 5**
 - Windows Vista Configuration Options to Improve Performance..... 5

Sage MAS 90 and 200 Windows Vista™ Compatibility Guide

Version 4.10

Introduction

Sage MAS 90 and 200 version 4.10 is supported on computers using Windows Vista Business, Enterprise, and Ultimate editions. To obtain compatibility with Microsoft Windows Vista, certain features of Sage MAS 90 and 200 may not be fully functional in this version. **Sage recommends upgrading to version 4.20 for users running Vista workstations.**

This document describes the procedures required to run in the Windows Vista environment along with installation options that solve issues Windows Vista users may encounter. This document also contains instructions that must be performed for both Sage MAS 90 and 200 installations if you have first- or third-party applications integrated with Sage MAS 90 or 200.

Sage MAS 90 and 200 users must install service update 15 or higher for compatibility with Windows Vista. To download the latest service update and to view the latest supported operating system and hardware requirements, refer to the Supported Platform Matrix on the Support page of the Sage Online Web site at: www.sagesoftwareonline.com. Windows Vista users will also need to download and install **Sage MAS 90 and 200 Version 4.10 Vista Update** (410 Vista Service Update.exe).

Sage MAS 90 and 200 Installation Options

The following options apply only to **Sage MAS 90 Stand-Alone and Sage MAS 200 Workstation Setup** installations. The Sage MAS 90 and 200 architecture is designed to store all program files and data files in the same location; however, this conflicts with the Windows Vista User Access Control (UAC) logic that is enabled by default for all Windows Vista installations. Do not disable this feature because it can prevent the spread of malware and other unwanted programs. To avoid this issue, you have the following two options:

Option 1 – Install to the Root Folder

This option prevents the operating system from using the Windows Vista UAC logic to virtualize data files into hidden, local user folders. To run Sage MAS 90 or Sage MAS 200 Workstation Setup on the Windows Vista operating system using this option, install Sage MAS 90 or Sage MAS 200 Workstation Setup to a non-system controlled folder such as **C:\Sage Software** instead of installing to the default **C:\Program Files\Sage Software** folder. The selection of a non-system controlled folder can be made in the Select Destination Location screen displayed during an installation of Sage MAS 90 or Sage MAS 200 Workstation Setup. This option is not available for Sage MAS 90 Workstation installation because no folder selection is required.

Our testing shows that this is the most successful way to install Sage MAS 90 or Sage MAS 200 Workstation Setup in Windows Vista without any major performance or operating system repercussions. This option is also ideal for third-party applications that integrate with Sage MAS 90 or Sage MAS 200. These applications work better with Sage MAS 90 or Sage MAS 200 Workstation Setup in the root folder instead of in the **C:\Program Files** installation folders.

Sage MAS 90 and 200 Windows Vista™ Compatibility Guide

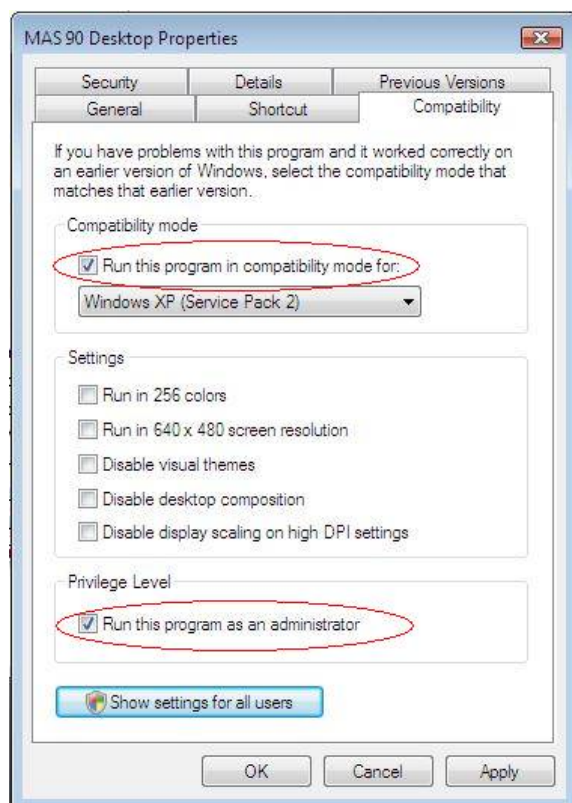
Version 4.10

Option 2 – Running in Elevated and Compatibility Modes

This option provides the same results as Option 1, but requires that the program be run with administrative privileges.

To run the software in Elevated and Compatibility modes, you must set the following options in the Sage MAS 90 or 200 Desktop Properties window.

1. From the Windows Start menu, navigate to the shortcut for Sage MAS 90 or 200 Desktop.
2. Right-click the Sage MAS 90 or 200 Desktop shortcut and select Properties.
3. In the Sage MAS 90 or 200 Desktop Properties window, click the Compatibility tab.
4. In the Compatibility mode section, select the Run this program in compatibility mode for check box. In the drop-down list, select Windows XP (Service Pack 2).
5. In the Privilege Level section, select the Run this program as an administrator check box.



6. For multi-user systems, click Show settings for all users, and repeat steps 4 and 5 (by default, the shortcut properties are only valid for the current user).
7. Click Apply, and then click OK.

Sage MAS 90 and 200 Windows Vista™ Compatibility Guide

Version 4.10

Sage MAS 90 and 200 Workstation Setup Installation Options

To run Sage MAS 90 or 200 on a Windows Vista machine as a workstation, you must run workstation setup after installing the Windows Vista update on the server. Sage MAS 90 Workstation Setup requires a change to the shortcut. You must change the Target and Start in folders to reflect the mapped drive (for example, M:\Sage Software\MAS90). For Sage MAS 200 Workstation Setup, you must install to a folder other than **C:\Program Files** as recommended in Option 1 – Install to the Root Folder in this document.

Installing Service Updates

Sage MAS 90 and 200 version 4.10 requires service update 15 or higher to be Windows Vista compatible. After installing the latest service update, an additional program titled **Sage MAS 90 and 200 Version 4.10 Vista Update** is required. This update must be installed on the Sage MAS 90 or 200 server and will modify the Workstation Setup components on that server. All users will subsequently need to re-run Workstation Setup on all workstations that are running Sage MAS 90 or 200 on this server. After the Windows Vista update is installed, users will not be able to access Sage MAS 90 or 200 without running the updated Workstation Setup.

Considerations

Third-Party Applications

There are several first- and third-party applications that integrate with Sage MAS 90 and 200. These applications are generally compatible with Sage MAS 90 and 200 in the Windows Vista environment if they are installed outside the **C:\Program Files** hierarchy.

There are some third-party applications that may not work properly in the **C:\Program Files** hierarchy without performing the procedure described in Option 2 – Running in Elevated and Compatibility Modes in this document.

Because the UAC logic in Windows Vista virtualizes data into a hidden, local user folder, other users and possibly other applications may not be able to find the correct Sage MAS 90 or 200 data if the software is not run in Elevated and Compatibility modes. Some third-party applications will not run or install into the **C:\Program Files** hierarchy, which can interfere with their integration with Sage MAS 90 or 200.

Application Compatibility Issues

The Windows Scheduler in Windows Vista requires Administrator privileges to add or modify any scheduled task. To use the Windows Scheduler, you must set up your Sage MAS 90 or 200 shortcuts with Elevated privileges (run the program as an Administrator). Even though a Windows Vista user may be logged on as an Administrator, Windows Vista automatically lowers the user's rights to the lowest level available. It is insufficient to run Sage MAS 90 or 200 logged on as an Administrator.

Sage MAS 90 and 200 Windows Vista™ Compatibility Guide

Version 4.10

Windows Help Engine

The Microsoft Windows Help Engine (WinHlp32.exe) is not supported in the Windows Vista environment because it does not conform to updated Windows Vista security standards. Sage MAS 90 and 200 moved to compiled HTML-based Help (.chm files) in version 4.20. Help files for most non-Business Framework and possibly Development Partner programs may not be converted to .chm files in this version of Sage MAS 90 or 200; therefore, these Help files will not load in Windows Vista.

Other programs that are started externally to Sage MAS 90 or 200, such as Level 3 Migration Tool, may also require Administrator rights. To use this utility, run Sage MAS 90 or 200 as Administrator (right-click the Sage MAS 90 or 200 Desktop icons in the Start menu and select Run as Administrator).

Microsoft provides a work-around that allows users to download and manually install the WinHlp32.exe engine on their Windows Vista systems. For more information, refer to the Microsoft Knowledgebase article at: <http://support.microsoft.com/kb/917607>

To download the WinHlp32.exe file, visit the Microsoft Download Center Web site at: <http://go.microsoft.com/fwlink/?LinkID=82148>. Running the WinHelp32 engine causes the UAC Administrator dialog box to appear when these Help files are selected. To completely bypass this situation, view WinHelp-based Help files from a Windows XP workstation.

Sage MAS 200 Installations and Sage MAS 90 Peer-to-Peer

Running the Sage MAS 200 server component on a Windows Vista machine is not supported. Similarly, running Sage MAS 90 as a server on a Windows Vista machine (peer-to-peer) is also not supported. The server components should be run on machines that are running as dedicated servers (such as Windows Server 2003 and Windows 2000 Server). Sage MAS 200 workstation components can be installed on a Windows Vista machine using the methods described in the applicable Installation Options section of this document. Sage MAS 90 workstation components can be installed on a Windows Vista machine with no additional modifications; however, third-party applications that run locally on a given workstation may not be compatible with Windows Vista or Sage MAS 90 if you are not running in Elevated and Compatibility modes.

Crystal Reports

Our internal testing shows that Crystal Reports version 10 runtime components used to generate reports through Sage MAS 90 and 200 function normally in Windows Vista. Running the Crystal Reports Designer to modify existing reports also functions normally. If you create reports independent of Sage MAS 90 and 200, you may encounter compatibility issues, particularly if connecting to other databases or performing functions that are not being used by Sage MAS 90 and 200. When installing the Crystal Reports Designer on a Windows Vista workstation, either select an installation folder that is external to the **C:\Program Files** hierarchy (recommended) or verify that Elevated and Compatibility modes are used for the Crystal Reports Designer shortcut. You are encouraged to run the Crystal Reports Designer on a non-Windows Vista workstation, if possible.

Sage MAS 90 and 200 Windows Vista™ Compatibility Guide

Version 4.10

Performance

Windows Vista is a significant upgrade to the Windows operating system and relies heavily on modern processors and technology. As such, you may experience performance issues when running Windows Vista, especially if you are not using a more modern processor, such as the Intel Core 2 Duo, with a large amount of available memory. Although Windows XP does have support for dual- and quad-core processors, Windows Vista is much more robust in supporting these configurations. If you are considering upgrading to Windows Vista workstations, you should take this into consideration when upgrading or purchasing new hardware. Some key hardware considerations are:

Processors	Intel Core 2 Duo/Extreme/Quad or AMD Althon/Sempron/Turion processors should be considered. Processors should run at 1.8 GHz or faster.
Memory	At least 1 GB of RAM should be installed, but 2 GB is preferred. Windows Vista has a larger memory footprint than Windows XP, so available memory will diminish faster.
Video	Windows Vista relies heavily on a more robust user interface, which in turn, requires a more powerful graphics card. Using a sub-standard graphics card puts more strain on the main processor to handle graphic displays and affects performance.

Windows Vista Configuration Options to Improve Performance

The following configuration options can be used to improve performance in Window Vista.

- Turning off the Aero interface and other display and user-interface options can help lower the operating system's footprint on available memory.
- The operating system detects hardware that is not up to Windows Vista specifications and disables some of these features automatically. Users re-enabling the features after Windows Vista disables them will encounter performance issues; therefore, keep those features disabled until the hardware can be upgraded.
- Windows Vista has made significant improvements to the Windows Firewall, anti-virus, and anti-spyware programs that are enabled by default on most systems. You may need to tune the parameters of these security programs to achieve acceptable performance characteristics on your networks, balanced with meeting the security needs of your system administrators. Make sure all anti-virus software programs and virus definitions have been updated and are certified to work on Windows Vista.